

# ROWASHER

SCIENCE LED CLEANING

## THE BIOREMEDIATING PARTS CLEANING SYSTEM



[www.rozone.co.uk](http://www.rozone.co.uk)



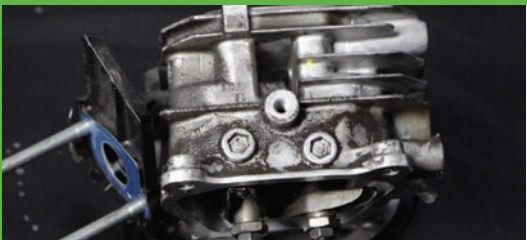
**ROZONE**  
INNOVATE • SUSTAIN • PERFORM


Employing the innovative technology of bioremediation, the ROWasher safeguards the health and safety of employees whilst dramatically lowering waste fluid generation, reducing the expense of hazardous waste removal and bringing savings to the user.


## KEY BENEFITS OF THE ROWASHER

KEY BENEFITS	ENVIRONMENTAL BENEFITS	HEALTH & SAFETY BENEFITS
<p>Solvent free</p> <p>Non-flammable, non-hazardous degreasing fluid</p> <p>Heated to 42°C, better cleaning, more pleasant to use</p> <p>No monthly service contracts</p> <p>Reduced waste disposal costs</p> <p>Energy cost savings with inbuilt Eco-mode</p>	<p>Lower risk to the environment</p> <p>No VOC emissions</p> <p>No "Solvent Emissions Directive"</p> <p>Improved carbon footprint</p> <p>Assists compliance with latest legislation such as ISO14001</p>	<p>No risk to employees</p> <p>Reduced PPE requirement</p> <p>Non-toxic degreasing fluid</p> <p>No vapours</p> <p>Simplified CoSHH reporting</p>

## HOW THE ROWASHER WORKS

- 

Oil and grease are washed off the dirty part and flow through the Filter in the sink into the ROWasher tank
- 

The Filter is the KEY to the system – it not only traps particles down to 50 micron, it also contains millions of Rozone microbes.
- 

Heated to 42°C, the microbes become active in the ROWash solution and eat the oil and grease turning them into CO<sup>2</sup> and water – effectively recycling the fluid.

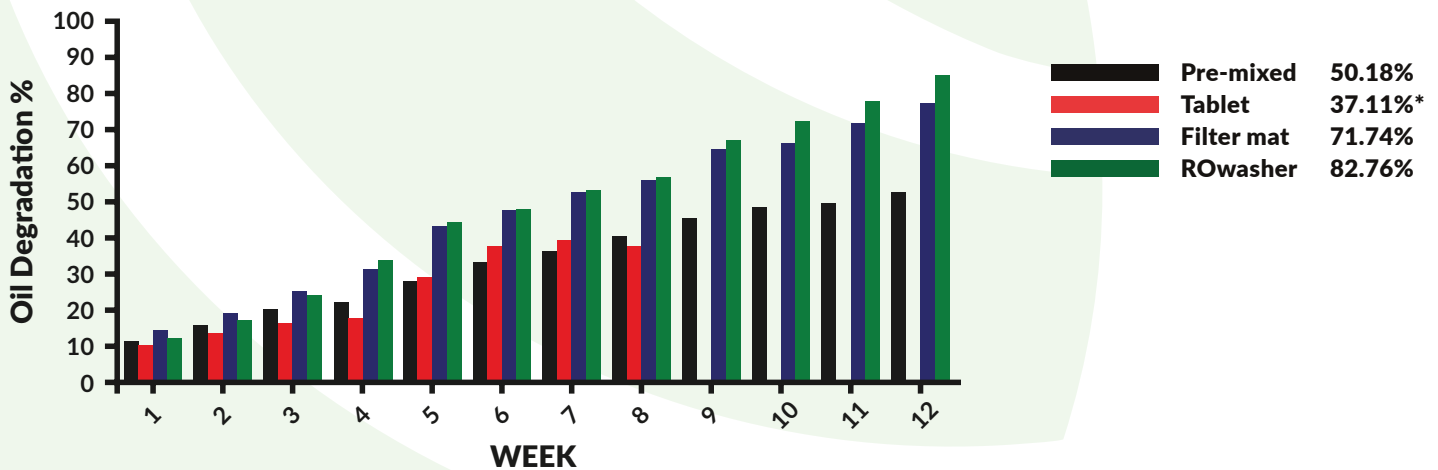
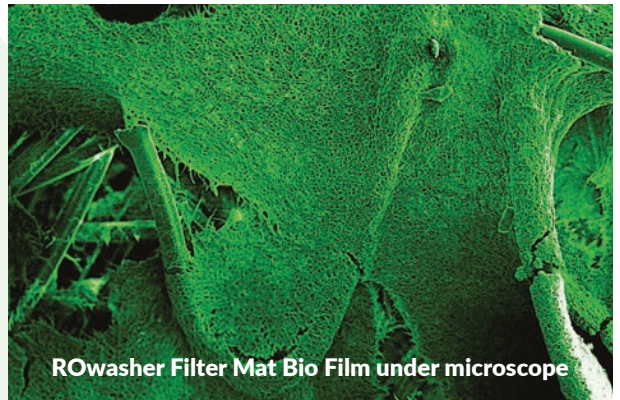
# SCIENCE LED CLEANING

To ensure that our ROWasher machine delivers the best cleaning performance possible, we have developed the fluid and the microbial filter mat

with our in-house scientists, formulation chemists and the microbiology team at the University of Wolverhampton.

## ROWASHER MICROBIAL FILTER MAT

We have proven scientifically that the filter mat is the best way of delivering the microbes into the ROWasher system as it then acts as scaffolding, helping to create a breeding ground for the microbes which cling, grow and breed on the fibres to form a reservoir of oil eating microbes. This bio film of microbes means that for the month-long life of the filter, there is a constant supply of microbes working to degrade the hydrocarbons and maintain the optimum cleaning performance of the parts washer.



The figure shows the oil degradation rate in the ROWasher over 12 weeks compared with competitor bioremediating partwashers.

The key denotes the different microbe delivery methods and their total oil degradation result at week 12.

\* Results only recorded to 8 weeks due to machine failure

# CHOOSE THE ROWASHER TO SUIT THE WAY YOU WORK

## STATIC ROWASHER

Fits most applications and has everything you need in a manual partswasher – easy to use push button on/off switch, a flow control timer and a super capacity pump. A flexible nozzle with highly visible orange tip to control fluid aim, gives a powerful adjustable flow rate, whilst a self-cleaning brush is the ideal tool to agitate stubborn dirt. A 200 micron basket filter set into the sink tray traps larger particles. The automatic switch off pump and heater if minimum fluid level is reached is a built-in safety feature of the ROWasher.

- // Heats to 42°C
- // Automatic energy saving mode
- // Thermostatically controlled
- // 60L tank capacity
- // 1000 watt industrial heater
- // 15L per minute Pump capacity
- // Heavy duty MDPE
- // 150kg load capacity

### Overall Dimensions:

W 71cm x L 86cm x H 106cm Inside sink: W 58cm x L 67cm x D 17cm



## MOBILE ROWASHER

The Mobile ROWasher is the ideal solution when you need a cleaning station to come to you. Loaded with all the same features as the Static ROWasher but with high quality 360° rotational front wheel castors and locking brakes for easy, safe manoeuvrability. Cleaning where you need it.

- // Heats to 42°C
- // Automatic energy saving mode
- // Thermostatically controlled
- // 60L tank capacity
- // 1000 watt industrial heater
- // 15L per minute Pump capacity
- // Heavy duty MDPE
- // 150kg load capacity

### Overall Dimensions:

W 71cm x L 86cm x H 108cm Inside sink: W 58cm x L 67cm x D 17cm



## XL ROWASHER

The XL ROWasher comes with an extra large sink top to manage all jobs large or small. Its two self-cleaning flo-thru brushes means it can be used as a two man work station.

- // Heats to 42°C
- // Automatic energy saving mode
- // Thermostatically controlled
- // 60L tank capacity
- // 1000 watt industrial heater
- // 15 Litre per minute Pump capacity
- // Heavy duty MDPE
- // 200kg load capacity

### Overall Dimensions:

W 97cm x L 126cm x H 109cm Inside sink: W 80cm x L 101cm x D 19cm



# CHOOSE THE ROWASH SOLUTION FOR THE MATERIAL YOU ARE CLEANING

ROwash Degreasing Solution is a pH neutral mix of emulsifiers and surfactants that has been specially formulated by our Scientists to produce a biodegradable, non-toxic, non-caustic and non-hazardous oil dispersant and degreaser. It contains no known carcinogens, has no flash point and releases no vapours or VOCs. A degreasing solution that is as powerful as solvent but without the hazards. It is designed to degrease oily parts quickly

and effectively as the machine is heated from 37°C to 42°C which helps to reduce the viscosity of oil and grease making removal from parts easier. The concentration of surfactant in the formula has been specially chosen by our in-house Scientists to make the contaminant particles (hydrocarbons) the smallest they can be, so the microbes can easily break them down. This ensures the fluid stays cleaner for longer.

## ROWASH 03

### GENERAL DEGREASING SOLUTION

Highly efficient on contaminants such as motor oil, bearing grease, cutting fluids and hydraulic fluid. **NSF certified.**

## ROWASH 06

### SPECIALIST METALS SOLUTION

Not corrosive on a wide range of yellow and ferrous metals such as aluminium, copper, iron and steel, the unique blend of surfactants in ROWash 06 effectively reduces the surface tension allowing deposits to be easily rinsed from metal surface without streaking. **NSF certified.**



# CHOOSE THE MICROBIAL FILTER MAT TO MEET YOUR CLEANING DEMANDS

The **ROWasher Microbial Filter Mat** is the key component of the ROWasher parts cleaning system. It is designed to deliver our microbes into the ROWasher system where they break down or “eat” oil and grease washed off dirty parts. The top white Filter Mat layer is designed to trap large particles up to 50 microns whilst the blue layer provides support for the microbes to breed and grow a microbial reservoir to be released into the ROWasher. There are different types of microbes in our Filter Mat designed to degrade different types of oil and grease. All are Bio-Safety Level 1 Microbes which are non-pathogenic or no risk to humans or animals.

The **ROWASHER MICROBIAL FILTER MAT** must be changed every month to keep the microbe colony healthy and maintain the cleaning performance of ROWasher.

### STANDARD SINGLE LAYER FILTER

The Single Layer Filter has one white layer and one blue layer.

### HEAVY USE MULTI-LAYER FILTER

The Multi-Layer Filter works in the same way introducing microbes into the ROWasher system but has four white layers on the mat to trap dirt and debris - designed to be peeled away once a week for optimum performance.



Pictures are for illustrative purposes only. Rozone reserves the right to change specifications at any time.

# KEY FEATURES OF THE ROWASHER

## Robust double-skinned tank for strength & energy savings

### No oxygen pump required saving on machine running costs

Other parts washers need an oxygen pump to aid the bioremediation process. No oxygen pump is required in the ROWasher because we have specially chosen microbes that work on aerobic and anaerobic levels - we discovered in our comparative laboratory work that oxygen causes more sludge to be circulated through the solution.

## Automatic energy saving mode

Fully removable electronics module for easy maintenance

### Easily maintained in-house with plug and play features

Static, Mobile, Large Sink and Benchtop models.

Made in the UK. This has significantly reduced our environmental footprint.

## COMPLIANCE

- ROHS • IP65 compliant • EN60335 • EN61000
- EN ISO 12100:2010 • European Machinery Directive MD2006/42/EC

## ECO MODE

The ROWasher features an energy saving Eco Mode, where the temperature drops to 37°C when not in use (overnight and weekends). This not only saves on energy costs but we have now developed the ideal environment for the microbes to grow; an operating temperature of 42°C is great for cleaning but we have introduced microbes which thrive at lower temperatures too meaning healthy microbes that will best degrade the oil to ensure our customers achieve the best possible cleaning performance. We balance cleaning with the bioremediation to achieve the best results.

## MAINTENANCE

The ROWasher is easy to maintain in-house with a monthly change of the Microbial Filter Mat and top-up of ROWash Solution when the low fluid indicator light shows.

ROWasher boasts 42% reduction in energy costs compared with leading competitor\*

Did you know: Each filter mat contains over 200,000,000 friendly oil eating microbes

\* For further details visit [www.rozone.co.uk](http://www.rozone.co.uk)



**ROWASHER**  
SCIENCE LED CLEANING

 **ROZONE**  
INNOVATE • SUSTAIN • PERFORM

.....

**In today's increasingly legislative environment, there is a demand for cleaning, pollution control and other innovative technologies that benefit employees, society and the environment – at the same time delivering a reduction in operating costs and improving efficiency. Our aim with the ROWasher is to help companies reduce the use of harsh chemicals in their cleaning processes, safeguarding the health and safety of staff and customers, whilst lowering their impact on the environment.**

.....

The demand for our range of bioremediating partwashers has developed significantly since we began in 1996 and we are proud to work with a wide range of customers including **Defence, Aerospace, Automotive, Plant Hire, Cycle, Government and Municipal, Engineering and Manufacturing** and many more. We've also built up a significant export business, resulting in our UK developed and manufactured technologies reaching a global audience.

.....

**For more information about the ROWasher or Rozone:**

**Visit:** [www.rozone.co.uk](http://www.rozone.co.uk)

**Email:** [info@rozone.co.uk](mailto:info@rozone.co.uk)

**Call:** +44 (0) 121 526 8181

.....

# ROWASHER

SCIENCE LED CLEANING

**For more information about the  
ROwasher or Rozone:**

**Visit:** [www.rozone.co.uk](http://www.rozone.co.uk)

**Email:** [info@rozone.co.uk](mailto:info@rozone.co.uk)

**Call:** +44 (0) 121 526 8181



**ROZONE**  
INNOVATE • SUSTAIN • PERFORM